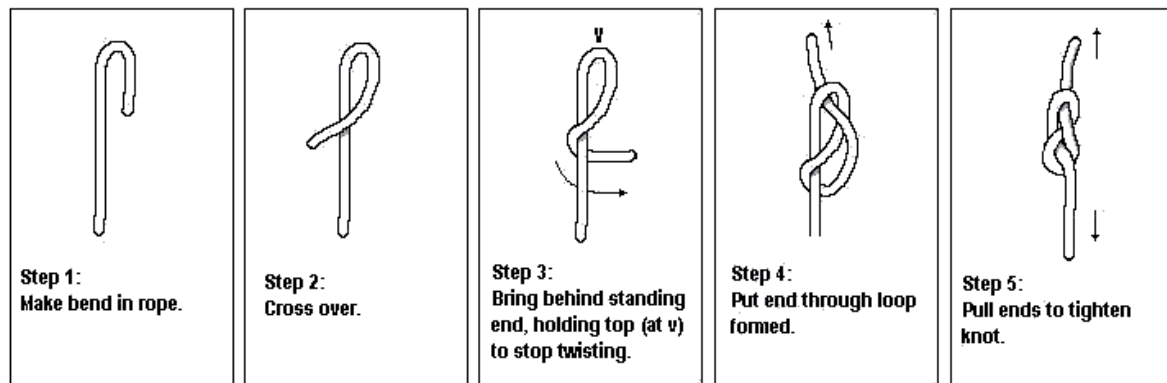


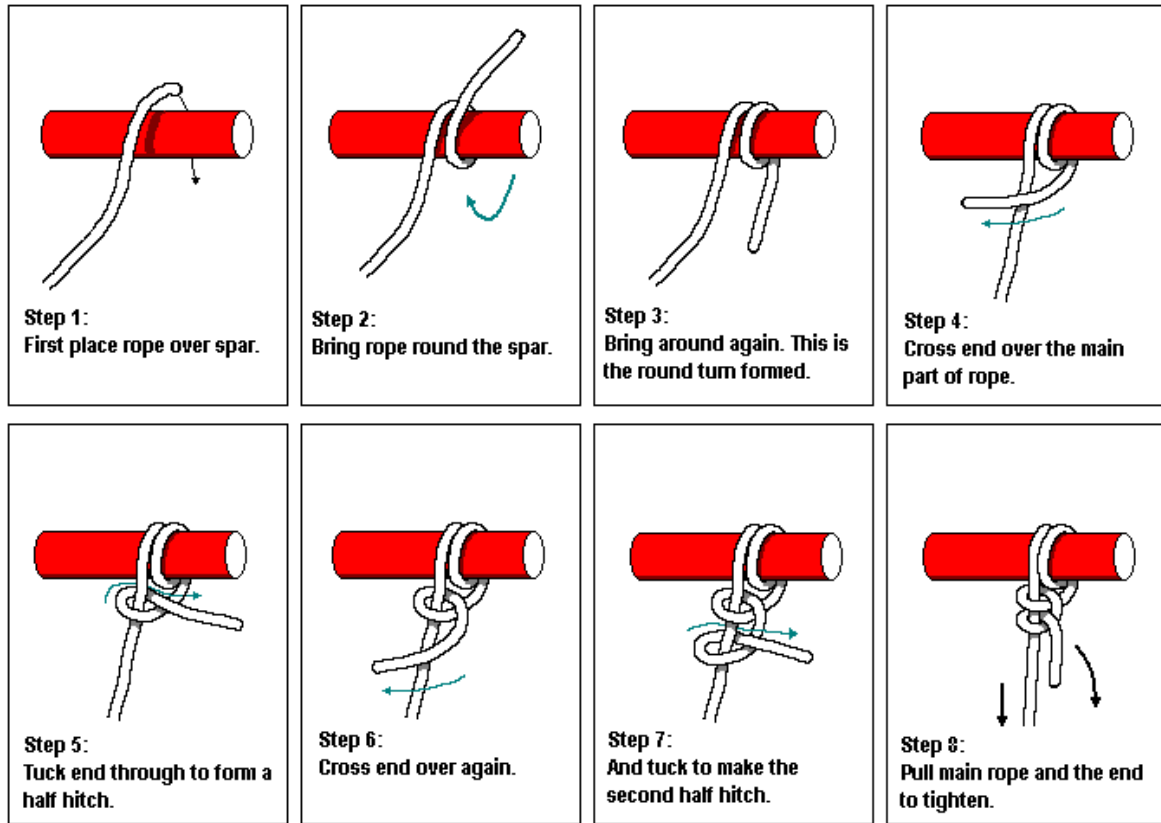
Figure of Eight Knot

The two most popular kinds of stopper knots are the figure of eight knot and the overhand knot. The figure of eight knot is demonstrated first. Another type of stopper knot is the stevedore knot. This will be treated separately as some confusion can sometimes occur with this knot. The figure of eight is used for tying the knot at the end of a sheet (sail rope) to prevent the rope pulling through the eye.



Round Turn and two half hitches

This knot secures a rope to spar or ring. It is a very useful knot.



Bowline

This is rescue knot. This is one of the most useful knots to know. Used for tying a loop at the end of a rope.

